
Anti-human α -Synuclein mab 10D2

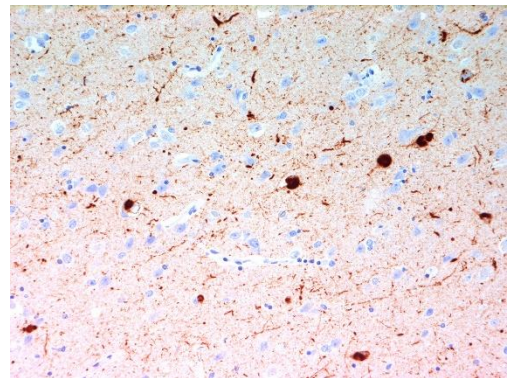
Catalogue number	Package size
847-0102004701	100 μ g
847-0102004703	1 mg

For research use only.

Product:	monoclonal antibody
Clone:	10D2
Host:	mouse
Isotype:	IgG1 _k
Immunogen:	recombinant human α -Synuclein
Specificity:	human α -Synuclein, amino acids 119-126 (DPDNEAYE)
Purification:	purified by affinity chromatography
Purity:	> 95% by SDS-PAGE
Solution:	PBS pH 7.4 without additives
Storage:	at -20 °C (repeated thawing and freezing should be avoided)
Applications:	ELISA, Western Blot, Immunohistochemistry
Dilution:	2 ng/ml in ELISA, 1-2 μ g/ml in Western Blot, 1-5 μ g/ml in IHC
Reactivity:	human α -Synuclein

Immunostaining for α -Synuclein in the Amygdala of an individual patient with Lewy body disease.

(Kindly provided by G. Kovacs, Vienna)



Roboscreen GmbH
Hohmannstraße 7
04129 Leipzig • Germany

Phone: +49 341 989 734 0
Fax: +49 341 989 734 199
info@roboscreen.com
www.roboscreen.com

CEO
Dr. Ingolf Lachmann

Ust-IdNr. DE 813064314
County Court Leipzig
HRB 17503
Leipzig