

Anti-human phospho-231 TAU mab 4C10

Catalogue number	Package size
0102003101	100 µg
0102003103	1 mg

For research use only.

Product:	monoclonal antibody
Clone:	4C10
Host:	mouse
Isotype:	IgG1 _k
Immunogen:	Synthetic peptide KKVAVVRT(Pi)PPKSPSS
Specificity:	human TAU phosphorylated at amino acid position 231 (T)
Purification:	purified by affinity chromatography
Purity:	> 95% by SDS-PAGE
Solution:	PBS pH 7.4 without additives
Storage:	at -20 °C (repeated thawing and freezing should be avoided)
Applications:	ELISA, Western Blot, Immunohistochemistry
Dilution:	1 µg/ml in Western Blot and IHC
Reactivity:	PHF TAU, phosphorylated TAU at amino acid position 231 (T)

Figure 1

Immunostaining of Astrocytic plaques in CBD using antibody 4C10.

Kindly provided by G. Kovacs, Vienna.

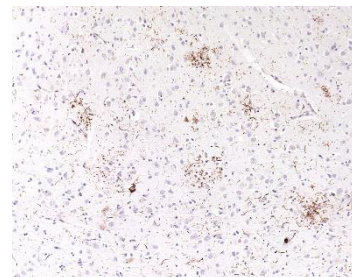


Figure 2

Brain homogenate of a tau(P301L)-transgenic mouse was separated by SDS-PAGE under reducing conditions and blotted on nitrocellulose membrane. NC membrane was incubated by 1 µg/ml of mab 4C10. Mab 4C10 reacted specifically with the phosphorylated TAU and fragments of lower molecular weight.

Analyses were kindly performed by group of Dr. Max Holzer, Paul-Flechsig-Institute, University of Leipzig, Germany.

MW (kDa)

72 —
55 —

