

Anti-bovine prion protein mab 7B6

| Catalogue number | Package size |
|------------------|--------------|
| 847-0102001101 | 100 µg |
| 847-0102001103 | 1 mg |

For research use only.

| | |
|----------------------|---|
| Product: | monoclonal antibody |
| Clone: | 7B6 |
| Host: | mouse |
| Isotype: | IgG1 _k |
| Immunogen: | recombinant bovine prion protein |
| Specificity: | conformational epitope of bovine prion protein |
| Purification: | purified by affinity chromatography |
| Purity: | > 95% by SDS-PAGE |
| Solution: | PBS pH 7.4 without additives |
| Storage: | at -20 °C (repeated thawing and freezing should be avoided) |
| Applications: | ELISA, Western Blot (see figure below) |
| Dilution: | 2 ng/ml in ELISA, 5 µg/ml in Western Blot |
| Reactivity: | bovine, human, sheep and deer prion protein |

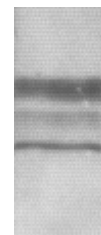
Figure

Native bovine prion protein from brain (*M. oblongata*) was separated by SDS-PAGE under reducing conditions and blotted on nitrocellulose membrane. NC membrane was incubated by 1 µg/ml of mab 7B6. Bound antibody was detected using horseradish peroxidase conjugated goat anti-mouse IgG/M antibody (ZYMED) and H₂O₂/TMB substrate solution. Mab 7B6 reacted specifically with bands of PrP^C.

MW (kDa)

29

21



Roboscreen GmbH
Hohmannstraße 7
04129 Leipzig • Germany

CEO
Dr. Ingolf Lachmann

Phone: +49 341 989 734 0
Fax: +49 341 989 734 199
info@roboscreen.com
www.roboscreen.com

Ust-IdNr. DE 813064314
County Court Leipzig
HRB 17503
Leipzig